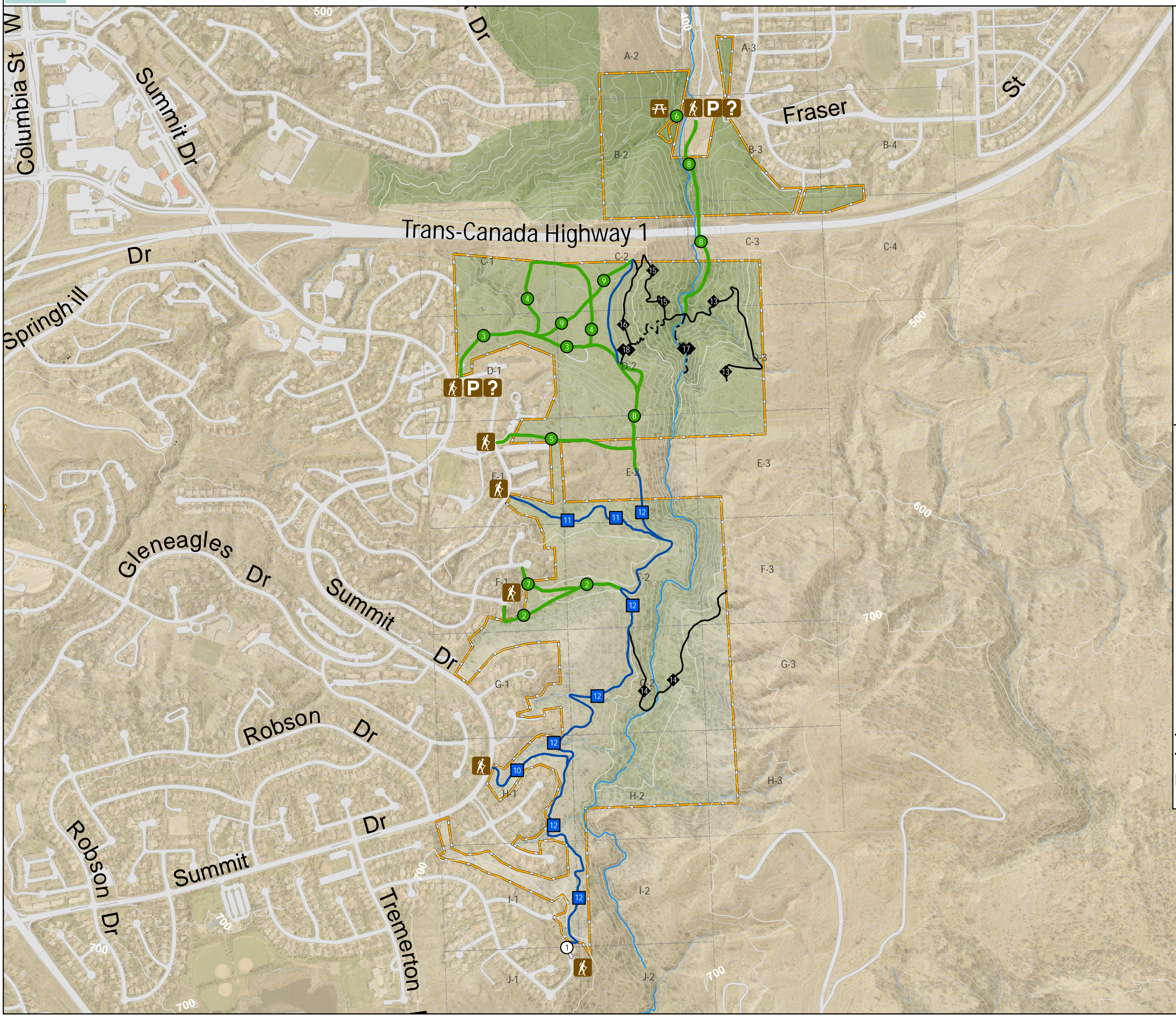
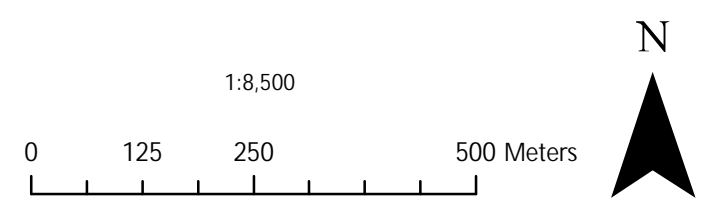


# Peterson Creek Nature Park



City of Kamloops  
 Parks, Recreation and Cultural Services  
 910 McGill Road  
 Tournament Capital Centre  
 Kamloops BC V2C 6N6  
 www.kamloops.ca  
 250-828-3655



P

- Trail Head
- Parking
- Information Kiosk
- Picnic Area

Trail Classification

- Easiest
- Easy
- Extremely Difficult
- More Difficult
- Very Difficult

Trail #	Name (Distance-km)
1	Tom Moore (0.1)
2	FHA Collins (0.4)
3	Grasslands (0.5)
4	Grasslands Loop (0.6)
5	Grouse Gulch (0.2)
6	Park Access (0.1)
7	Sagebrush (0.1)
8	Tom Moore (0.9)
9	Tom Moore Connector (0.3)
10	Escape (0.3)
11	Mariposa (0.5)
12	Tom Moore (1.8)
13	Billy Minor North (0.6)
14	Billy Minor South (0.7)
15	Tom Moore (0.4)
16	Tom Moore Braid (0.2)
17	Bridal Veil Falls (0.2)
18	Tom Moore Braid (0.3)
E7	Emergency Services Map Grid